

your
symeyo™
Manual

FREE RANGE IRISH
CHICKEN SUPREME WITH
FETA CHEESE & OLIVES

€3.75

DRY AGED IRISH
HEREFORD PRIME BEEF
STRIPLOIN STEAKS

€34



symeyo™.com

CLICK • PRINT • DISPLAY

Symeyo™ is the Product Display Label Printer that enables you to create your own double-sided customized price sign with the colour and size of your choice.

Symeyo™ enables you to upsell your counter with a high quality information label that can also aid with compliance.

Each Symeyo™ Media Printer is engineered and optimized to print Product Display Labels using Symfoils™, at the highest possible print quality.

From media handling through to the finished Price Tag our hardware and firmware ensure that great print quality is achieved

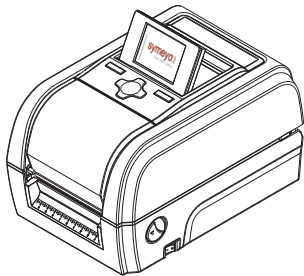
Your Symeyo™ printer works with the Bartender Ultra-Lite Label Design software and a Windows Printer Driver.

Symeyo™ is made for you and works through a very easy set up so let's get it started?

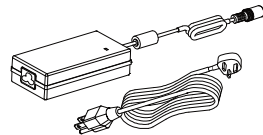
How to Set Up Your Symeyo System

- 1 Bartender Installation**
- 2 Install Your Symeyo™ Printer Driver**
- 3 Load your Product Display Labels**
- 4 Load your Ribbon/Foil on your Symeyo Printer**
- 5 Connect and turn your Symeyo Printer on**
- 6 Create your Format**
- 7 Click Print Display**
- 8 LCD Menu Function**

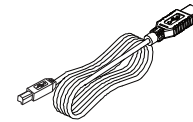
What is in the Box



B. Quick Start Guide



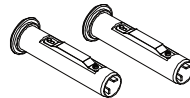
C. Symeyo™ Power Supply



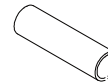
D. Symeyo™ USB Port Cable



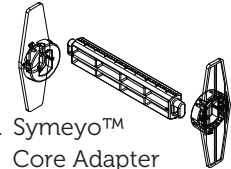
E. Symeyo™ Print Head



F. Symeyo™ Ribbon Spindle Black 2 Units



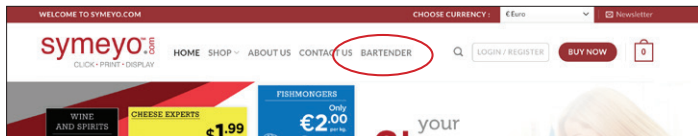
G. Symeyo Fix Tabs 1 ½" Core



H. Symeyo™ Core Adapter

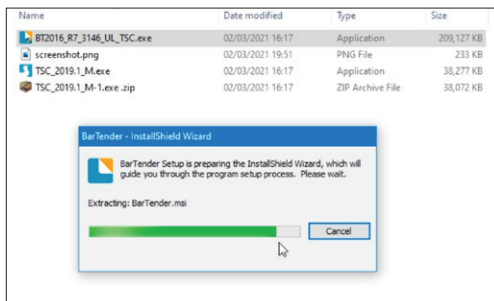
1 Bartender Installation

A. You can find your Bartender Software by clicking on the following button at the top of the Symeyo™ web page : <https://symeyo.com>

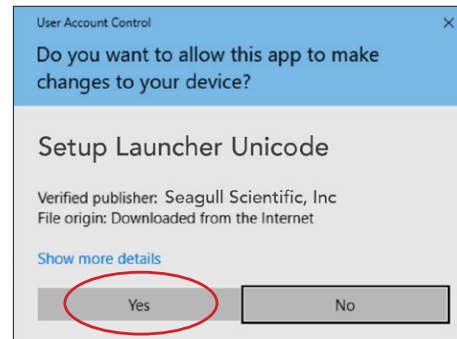


B. Click on the link and download your Bartender Software on your computer (BT2016-R7-3146-UL-TSC & TSC_2019.1_M-1) to a folder of your choice.

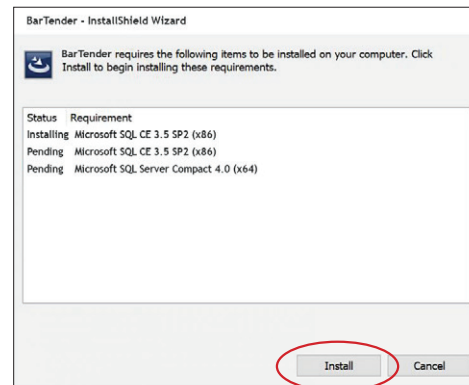
Name	Date modified	Type	Size
BT2016_R7_3146_UL_TSC.exe	02/03/2021 16:17	Application	209,127 KB
screenshot.png	02/03/2021 19:51	PNG File	233 KB
TSC_2019.1_M.exe	02/03/2021 16:17	Application	38,277 KB
TSC_2019.1_M-1.exe.zip	02/03/2021 16:17	ZIP Archive File	38,072 KB



C. If the error message "Active content can harm." appears as program loads click 'Yes'.



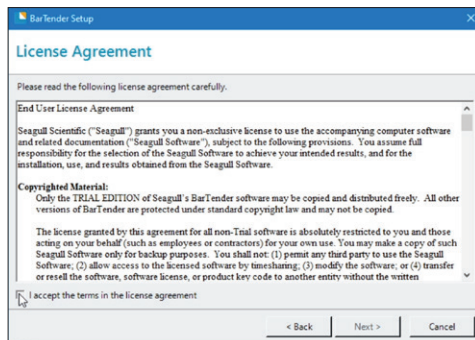
D. Your computer will then require to install the program on your computer; Click Install.



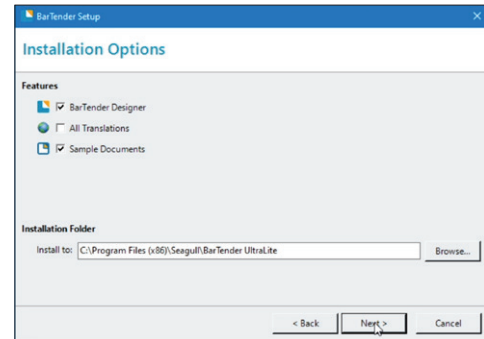
- E. The “TSC Special Edition Bartender R2016 R7 will appear; Click Next to proceed.



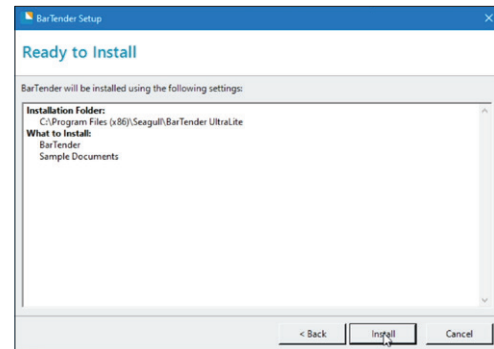
- F. English should appear as the default language. If not, select the “English” options and then Click ‘OK’.
- G. The “License Agreement” will appear. Once you are happy, tick the box next to ‘I accept the terms in the license agreement’. Then click ‘Next’.



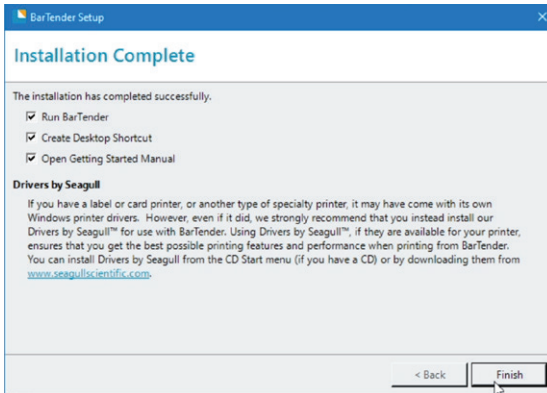
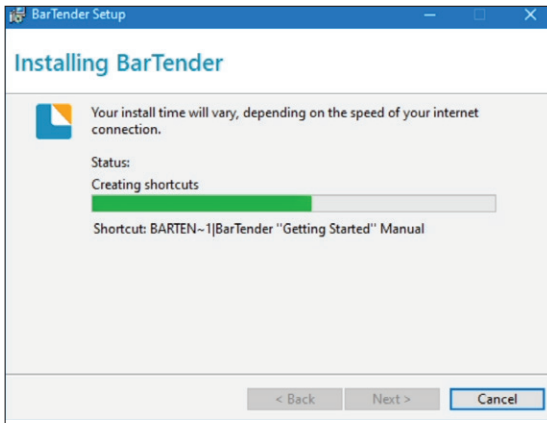
- H. You will then see the “Bartender Installation Options” with the two boxes ‘Bartender’ and ‘Sample Documents’ already ticked. Click Next.



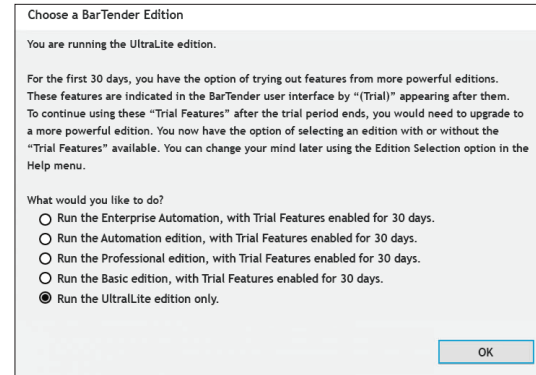
- I. The next box will be “Ready to Install” you will then click “Install”.



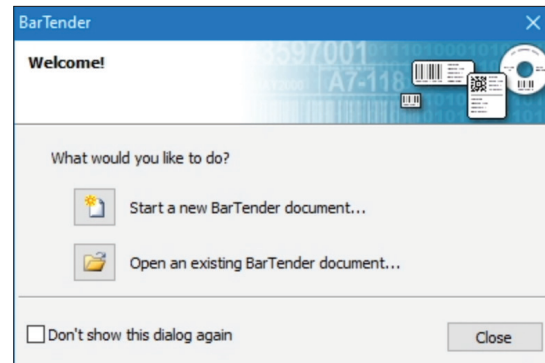
- J. After the install, please ensure that all three options are ticked on the "Installation completed" box and click on Finish.



- K. After "Finishing" you will choose your Bartender Edition; Please make sure to select "Run the Ultralite edition only"; This is the edition that all label templates are designed for and selecting any other one may not work as well in future.



- L. Click OK and you are all set up with your Bartender Software for Symeyo™.

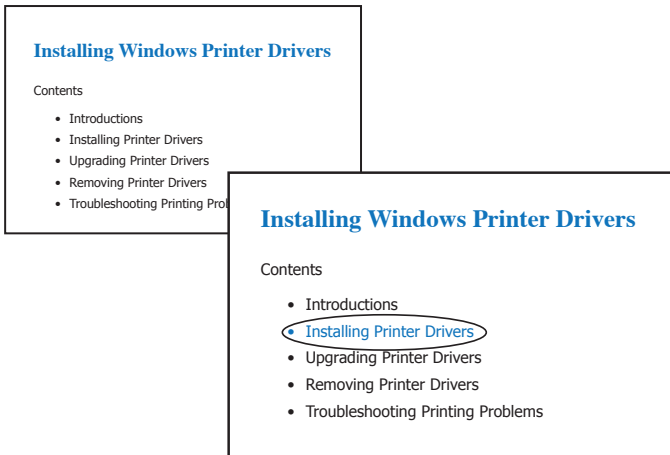
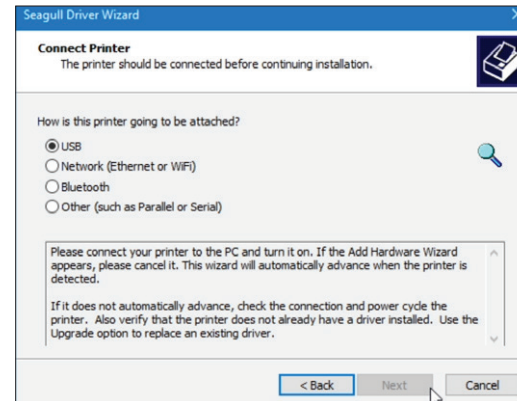


2 Install Your Symeyo™ Printer Driver

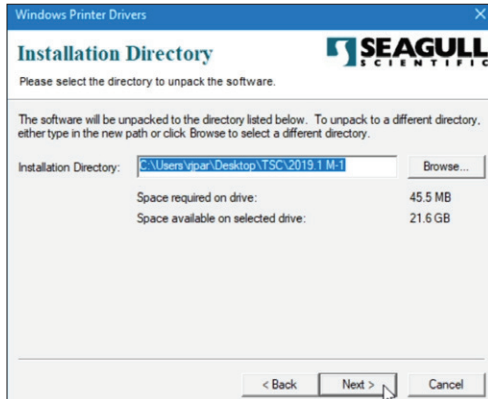
- A. If the printer supports the Plug and Play functionality and if you have connected it by using a USB or parallel cable, then the Windows Add a device wizard automatically detects the printer and displays a dialog that enables you to install a driver. Click Cancel and do not install the driver by using this wizard.
- B. In Windows Explorer, search for the installation directory where the driver files are located, and then double-click on the Driver Wizard utility.
- C. Click to select Install printer drivers, and then click Next.



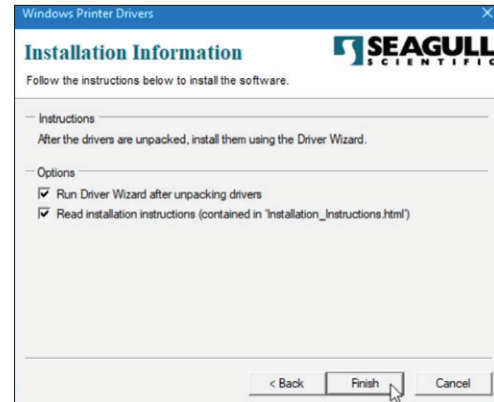
- D. Click to select the connection type and then click Next.



E. Configure the printer settings according to the steps in the wizard, and then click Finish.

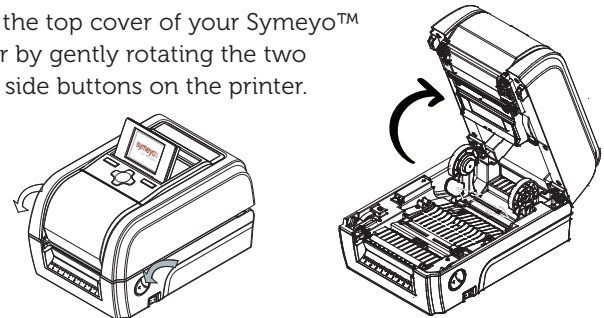


F. You now have your Driver Installed.

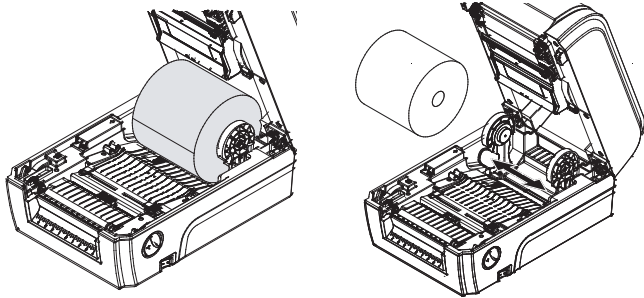


3 Load your Product Display Labels

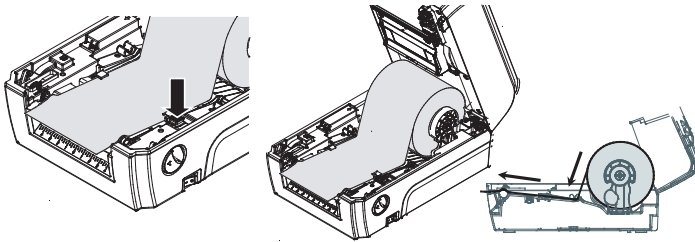
A. Open the top cover of your Symeyo™ Printer by gently rotating the two green side buttons on the printer.



- B. Inside of your printer you will find the Green Printer Media Holder; Kindly push your media holder to open on a side direction and allocate your PDL roll of labels with the label facing the wound out up meaning that the display side of your label will be visible.



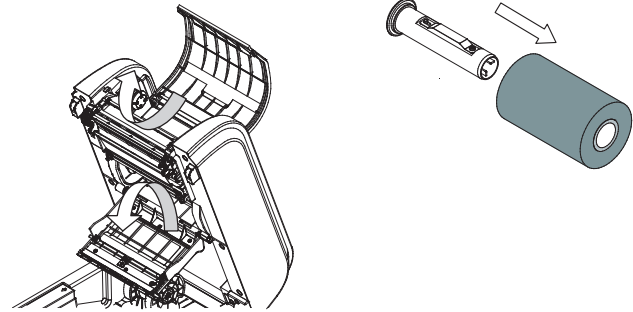
- C. After accommodating your PDL onto the media holder slight pull the roll passing the "Black Mark Sensor" and the "Platen Roller". Please make sure to adjust the Green Media Guide to the size of your labels by slowly pushing out or in to fit.



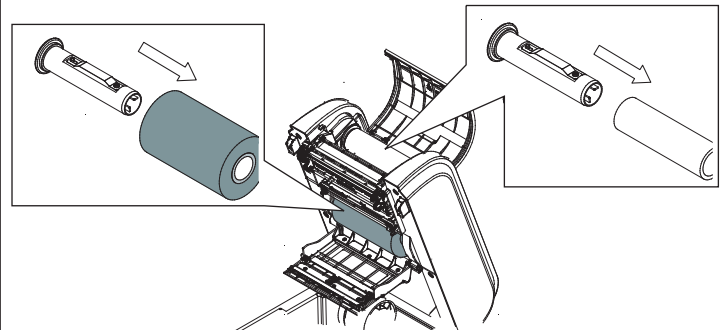
- D. You now have your PDL installed on your Symeyo™.

4 Load your Ribbon/Foil on your Symeyo Printer.

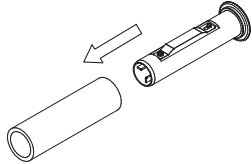
- A. Open the Top Front Cover of your Symeyo™ by pulling the black glossy cover up.
B. Insert the Ribbon on the Ribbon Supply Spindle by pulling the black glossy cover up.



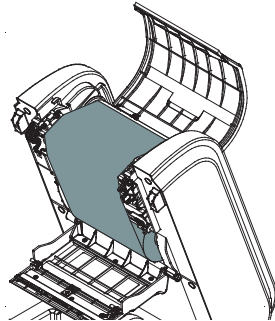
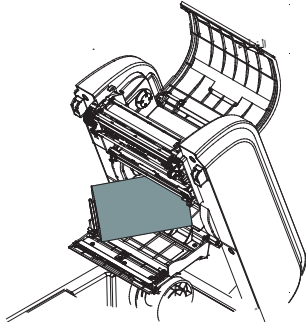
- C. Mount the Ribbon Supply Spindle on the rear hubs with the foil facing the wound out and the yellow side of the Spindle linking to the yellow part of the adaptor inside the printer.



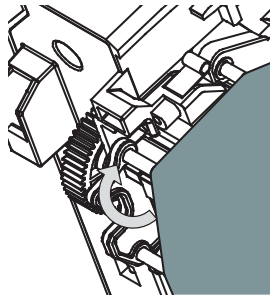
- D. Place a paper core onto the ribbon rewind spindle.



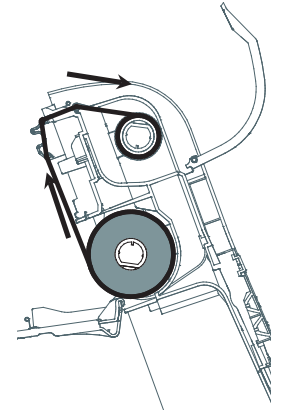
- E. Pull the ribbon out and now roll the end of the foil into the other Ribbon Rewind Spindle with the help of a small piece of tape in order to create a small second roll of the same Ribbon.



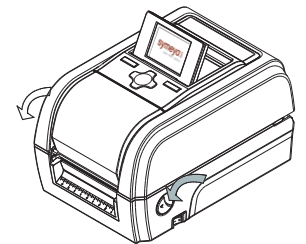
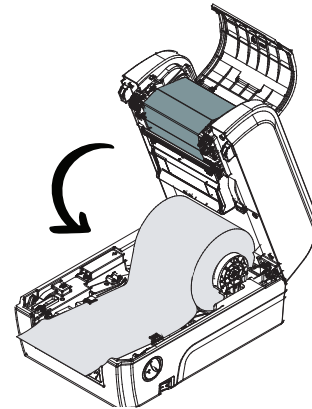
- F. Pull the second ribbon out passing in front of the print head until the other Media Holder and accommodate the roll fitting the yellow side of the Spindle to the yellow part of the adaptor inside the printer to fit.



Loading path for ribbon

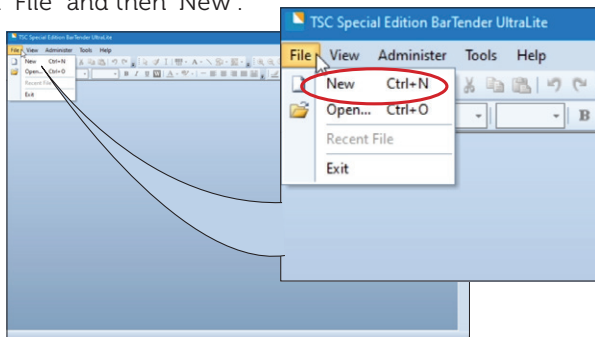


- G. Close the second media holder after accommodating the Ribbon and now you have your Foil correctly installed.

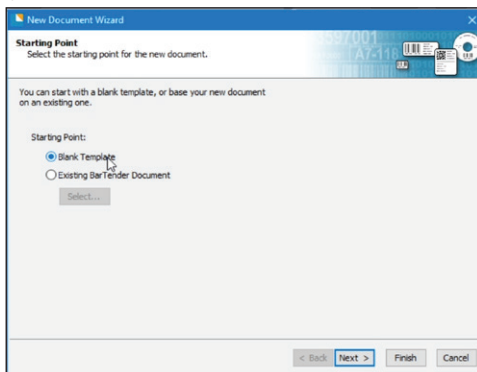


6 Create your Format

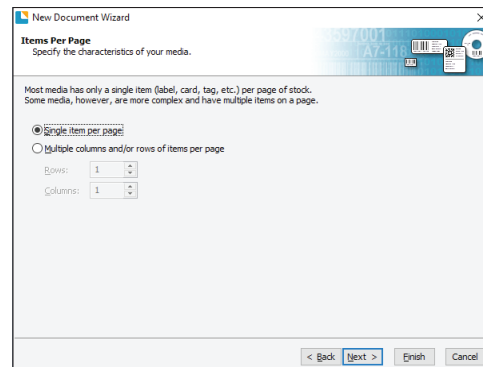
- A. Open your downloaded Bartender Ultralite Software saved on your desktop.
- B. Select the option "Start a New Bartender Document" click on "File" and then "New".



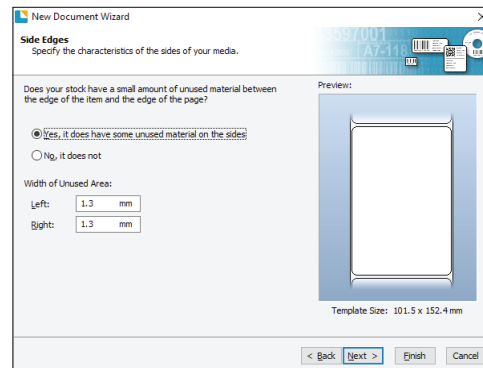
- C. Select "Start a New Template" -> Blank Template and click "Next"



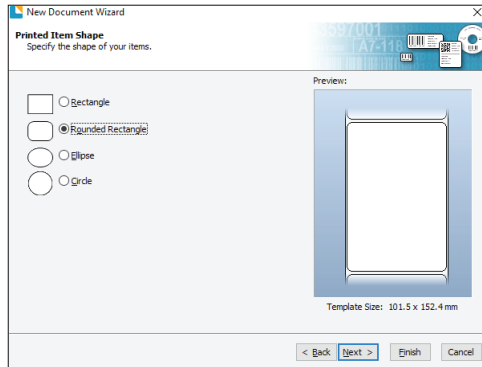
- D. Select "Single Item per Page" and click "Next"



- E. Select the option "Yes, it does have some unused material on the side" and click "Next"



F. Select your Format and click "Next"

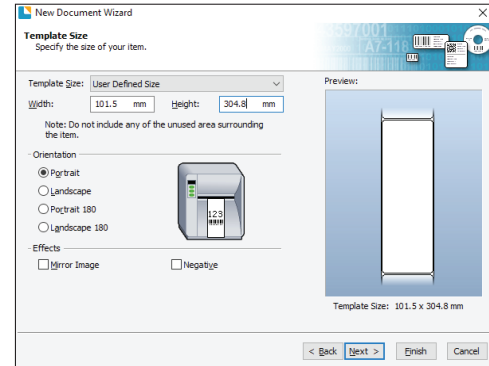


G. Insert your PDL size and in which direction you would like to print it. The size is the same as indicated on your Product Display Label Roll multiplying the length of the label by 2.

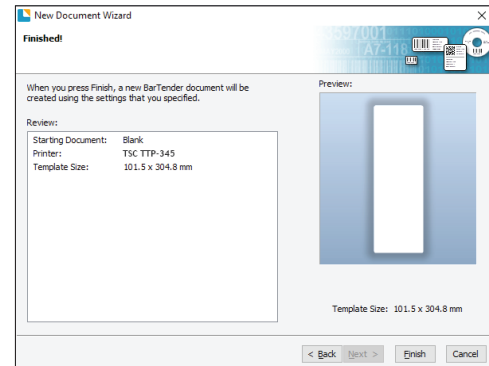
Example: If your selected and purchased PDL card is 100mmX150mm.

You will then have 100mm (Width) and 300mm (Length). Because Symeyo is a foldable label you will set up the format as 100mm (Width) and 300mm (Length). In this way you will be able to insert the information desired on the back and front of the card on your template and will fold

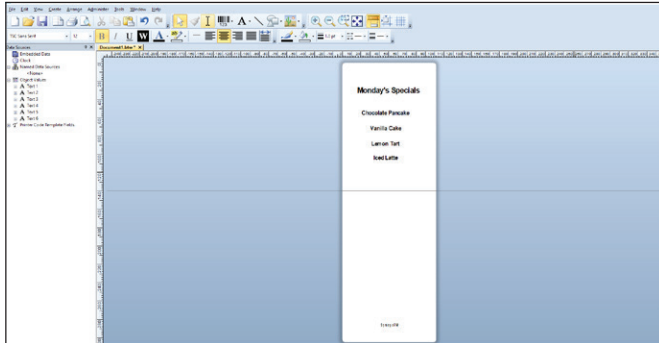
the label after printing to become a 100mmX150mm PDL Card.



H. You are now finished with your settings; Review the information on your "New Document Wizard" box and press "Finish" to create your bartender background file.



- I. A drawing of your design will appear on your Bartender Ultralite Screen As mentioned before your file will appear with a double sized width. You will now create a line in the centre of the file to be able to create a design for the front (Top Part of the file) and back (Bottom part of the file). To be able to create this line you will select the tool “Line” on the top options of your program and adjust in the exact centre of your file using the “rulers” around the “label”.



After that you are free to create your own information and content using all the tools available on your Bartender Ultralite Program. Whenever you are finished and happy with your design you can then save the format, so you are able to use it now and/ or print it later.

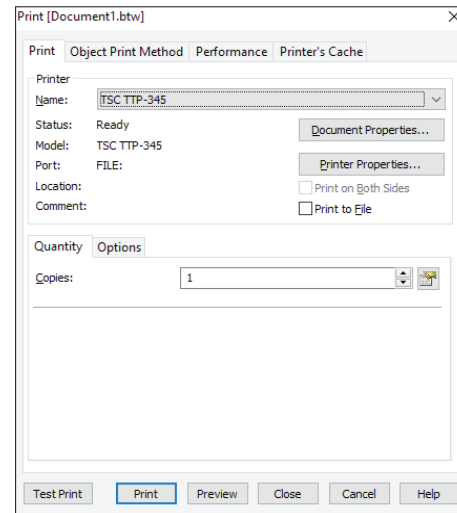
Your File can be saved by selecting the option “File” and after “Save As” on the left top side of your Bartender Program.

7 Click - Print & Display

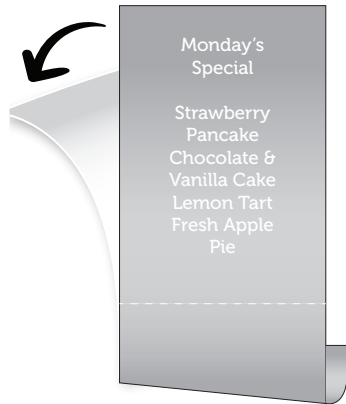
Now that you have your design created and your system set up you can print your Symeyo™ Labels.

Make sure to select your TSC-TTP345 as your printer and select the Bartender Ultralite Format created.

Click on the “Print” option and indicate how many labels you would like to print.

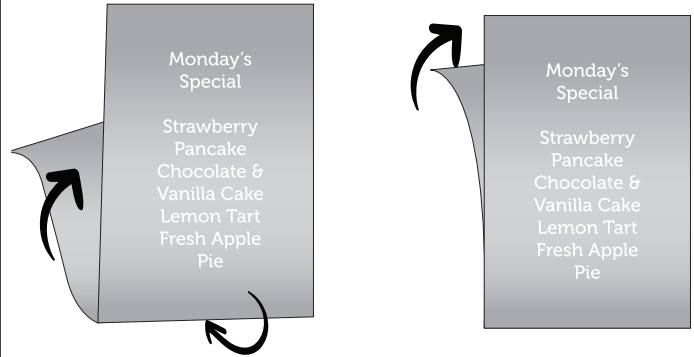


After printing you will need to fold the label in the middle; In order to do that you will first fold the label with the backing paper on it to create a folding "memory" on your PDL.

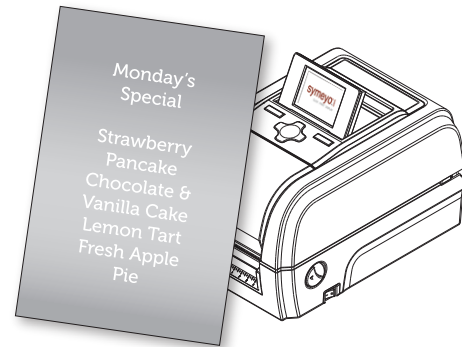


After that you will open your PDL again and remove the backing paper.

To fold you will gently and slowly start to fold the label from the middle/centre part to the top making sure that they are nice and smooth.



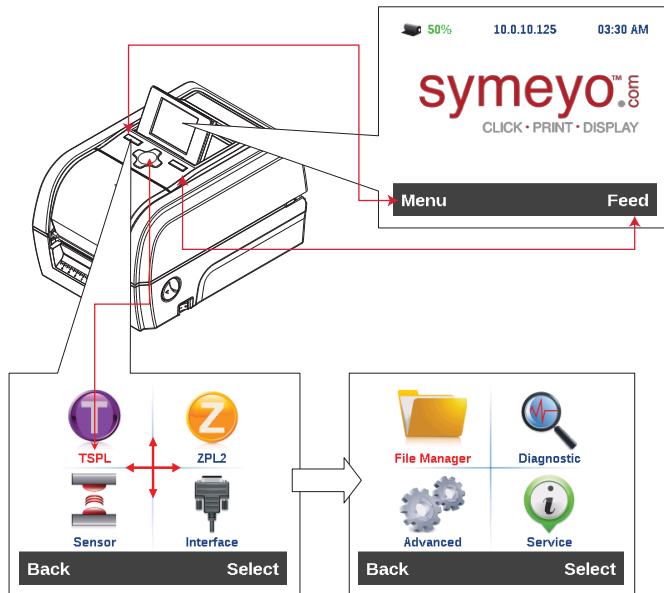
After that you will have your Symeyo™ label ready to be displayed.



8 LCD Menu Function

- A. Press the "Menu" button to enter the main menu. Use the "Cross" button to select the item on main menu. The selected item will turn red. Press the "Feed" button to enter the setting list.

Note: This LCD function is optional for TX200 and you don't need to use to print your labels since you will be using your bartender Software installed on your PC.

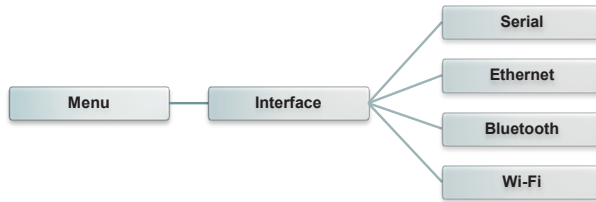


Functions:

- **TSPL:** This "TSPL" category can set up the printer settings for the following:
 - Speed
 - Density
 - Print Direction
 - Print Mode
 - Offset
 - Shift
 - Reference
 - Code Page
 - Country
- **ZPL2:** The "ZPL2" category can set up the printer settings for:
 - Darkness
 - Speed
 - Tear Off
 - Print Spec
 - Fonts & Images
 - Formats
- **Sensor:** This option is used to calibrate the selected sensor. We recommend calibrate the sensor before printing when changing the media.
- **Interface:** This option is used to set the printer interface settings.

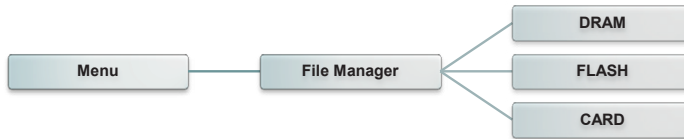
Interface

This option is used to set the printer interface settings.

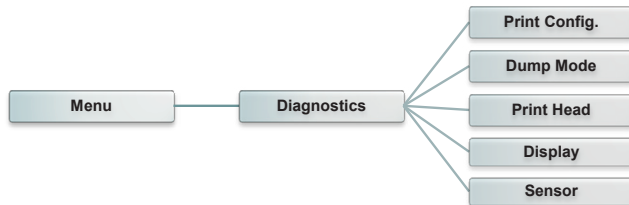


File Manager

This feature is used to check the printer available memory and file list.



Diagnostic



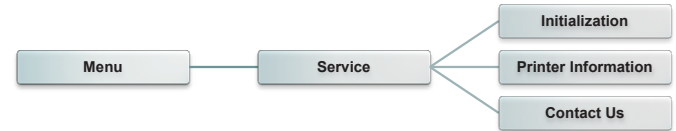
Advanced

This feature is used to set the printer LCD settings.



Service

This feature is used to restore printer settings to defaults and checking information for printer.



symeyoTM.com
CLICK • PRINT • DISPLAY